

A4LE ROCKY MOUNTAIN CHAPTER AWARDS - PEAK DESIGN AWARD SUBMISSION

LITTLE RAVEN ELEMENTARY SCHOOL

LITTLETON PUBLIC SCHOOLS



LITTLETON PUBLIC SCHOOLS
LITTLE RAVEN ELEMENTARY SCHOOL
0390

3

2

1

LITTLE RAVEN ELEMENTARY SCHOOL

LITTLETON, CO | LITTLETON PUBLIC SCHOOLS

Project Name: Little Raven Elementary School
Location: Littleton, CO
Specific Use: Public Elementary School

PROJECT TEAM

Architect: MOA ARCHITECTURE
Structural Engineer: KL&A
Civil Engineer: Proof Civil Co.
M/P Engineer: Envision Mechanical Engineers
Electrical Engineer: Ackerman Engineering
Landscape Architect: Design Concepts
Furniture Design: Meteor
IT/AV Design: BCER
School District: Littleton Public Schools
Superintendent: Todd Lambert
Contractor: GH Phipps
Project Delivery: CM/GC
Occupancy Date: 8/1/2023

PROJECT DATA

Grades: K-5
Pupil Capacity: 700 Students

PROJECT SIZE

Site: 5 acres
Gross Area: 93,993 GSF
Area per Pupil: 144 SF/pupil



CHIEF LITTLE RAVEN

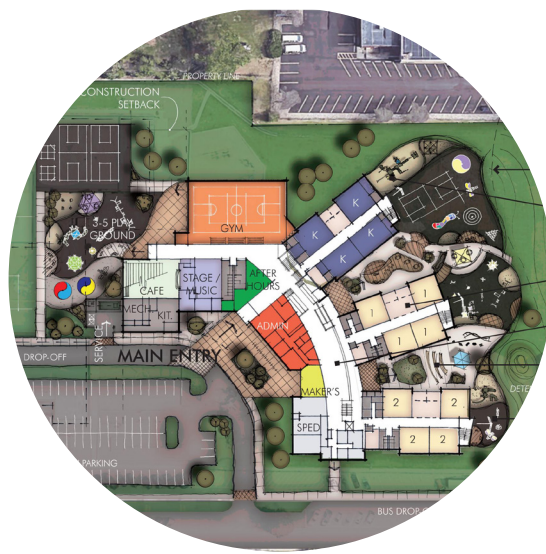
THE SIGNIFICANCE OF TREES

Native Americans have been expressing their gratitude for nature—specifically trees—for centuries. The Cherokee call trees the Standing People. A tree symbolizes permanence, longevity and its firm base symbolizes the concept of 'roots' and an ongoing relationship with natural surroundings.









PLANNING PROCESS

At the heart of Little Raven Elementary lies a story of collaboration and community, where diverse voices unite to shape a shared vision for learning. The journey began with the formation of a Design Advisory Group (DAG), a dynamic assembly of stakeholders—the design team, contractor, parents, teachers from other elementary schools, key district personnel and community members—all eager to contribute to the creation of a space that resonates with the needs of its students.

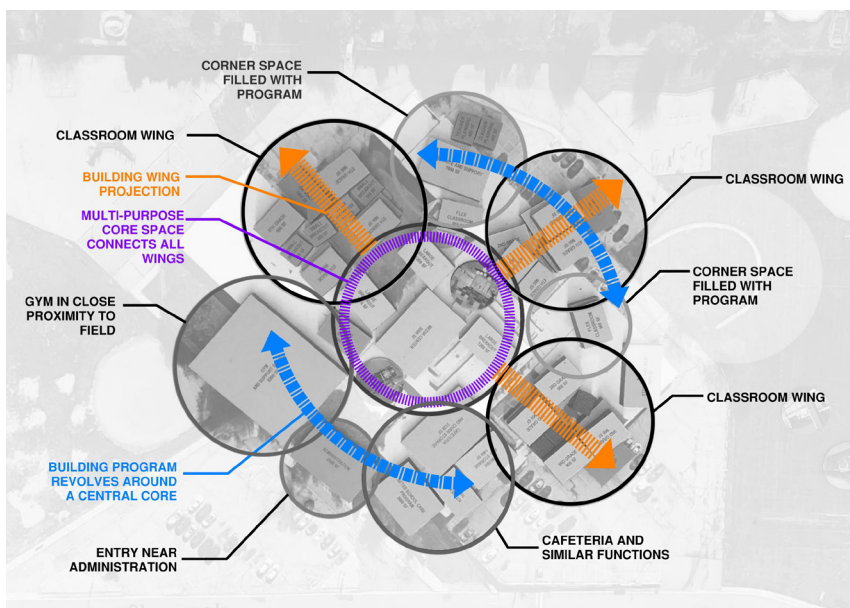
This inclusive committee embarked on a quest to uncover the unique identity of the new school, guided by the successful prototype of Dr. Justina Ford Elementary, also developed by MOA ARCHITECTURE. Each DAG meeting transformed into a lively exploration, delving into the nuances of the prototype while allowing the voices of the community to steer the design process. Through engaging exercises, the group pinpointed essential elements that would enhance the learning environment, infusing it with the culture and character of Little Raven's diverse student body.

As the planning phase unfolded, the DAG embraced the challenge of melding the tried-and-true aspects of the prototype with the distinctive needs of this vibrant community, which had merged students from the former Ralph Moody and East Elementary schools. The structure of the process was a tapestry of voices, weaving together insights to ensure every child felt represented and connected within their educational space.

The design team remained steadfastly engaged throughout the project, guiding the DAG from planning through the design and construction phases. Regular updates, site tours, and open lines of communication fostered a sense of shared ownership among all stakeholders. The collaboration extended beyond the design team, with the district's maintenance and operations teams involved in discussions, drawing reviews, and site visits during construction, ensuring the building would function seamlessly for years to come.

A critical aspect of this journey was to honor the community's voice while maintaining the integrity of the prototype. This delicate balance was achieved by continually revisiting Littleton Public School's vision, "Extraordinary learning, exceptional community, expanded opportunity and success for all students." This guiding principle served as a compass, directing each decision, from the layout of classrooms to the creation of inviting communal spaces.

As ideas flowed and designs evolved, the DAG crystallized a vision for Little Raven Elementary that would not only support current educational needs but also adapt to future shifts in learning methodologies. The result is a school that stands as a beacon of collaboration and creativity—a space where students can grow, explore, and thrive, all within a community that celebrates diversity and connection.



LEARNING ENVIRONMENT

At Little Raven Elementary, a vibrant learning ecosystem flourishes, embodying the spirit of community and curiosity that fuels its mission. Designed as a “four-round” model, the school accommodates around 650 students, inviting each to explore, discover, and connect with the world around them. Indoor and outdoor spaces weave together, creating a seamless flow where gathering areas extend from the classroom into nature, enhancing social interaction and learning.

As students step inside, they encounter colorful classroom pods, each themed around Earth’s ecosystems, branching from the heart of the school. These inviting spaces nurture a sense of place, where cozy reading nooks and vibrant collaboration areas encourage engagement. The environment radiates energy, reflecting the creativity and diversity of its community.

The Media Center serves as the heart of the school—a flexible hub for gathering, creating, and exploring. It connects to Maker and Art spaces, designed with overhead doors that invite the outdoors in, fostering an atmosphere where imagination knows no bounds. Outside, amphitheater seating and learning courtyards encourage lessons to spill into sunlight, merging education with nature.

Understanding that every student learns differently, the school offers various gathering spaces—small nooks for quiet reflection, collaborative areas for teamwork, and adaptable classrooms that open into shared breakout spaces. Each classroom, equipped with multimedia teaching walls and flexible furniture, transforms to accommodate discussions, hands-on projects, or quiet study. Tunable lighting and audio enhancements ensure all learners thrive in their environment.

Little Raven Elementary doubles as a community hub, with a gymnasium that serves as a gathering place for sports and recreation. The cafetorium transforms into an auditorium for performances, fostering pride and togetherness. Retractable seating and acoustical partitions facilitate seamless transitions, creating a dynamic space for various activities.

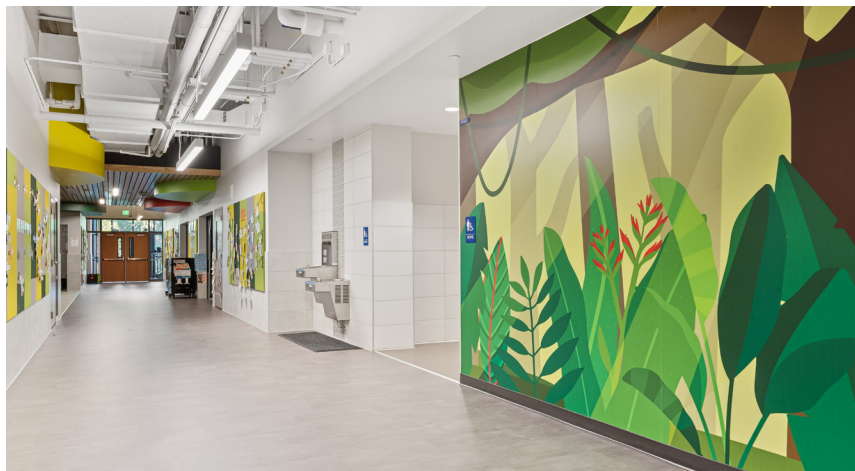
Inclusivity is woven into the school’s design, with spaces for students with special requirements integrated throughout, ensuring everyone feels a sense of belonging. Wall graphics, inspired by Earth’s ecosystems, guide younger students through the building, while textured tiles along corridors invite tactile exploration. Cozy reading nooks tucked throughout the school offer quiet corners, further enriching the learning environment.

Flexibility and adaptability are foundational principles at Little Raven. The classroom pod model promotes an innovative, activity-based approach to education, where learning extends beyond traditional desks. Overhead doors open classrooms to breakout areas, encouraging collaboration and dynamic interaction, inviting students to embark on educational adventures together.









PHYSICAL ENVIRONMENT

At Little Raven Elementary, the physical environment unfolds as a seamless blend of sustainability, safety, and inspiration. The thoughtfully designed school invites nature inside through expansive windows and carefully placed openings, encouraging students and teachers to engage with the world beyond its walls. The dynamic shape of the building embraces outdoor learning opportunities, allowing sunlight to pour into every classroom while operable windows invite fresh breezes, creating an invigorating atmosphere.

A high-efficiency lighting system, tunable by temperature and light level, illuminates all learning spaces and is controlled by occupancy sensors that automatically turn off when a space is unoccupied, promoting energy efficiency. Complementing this, the mechanical system operates with a higher efficiency than that required by code, reflecting a commitment to sustainability that permeates the entire school environment.

Safety is a cornerstone of this educational sanctuary, with a secure design that establishes multiple layers of protection. Tall exterior fencing and thoughtfully landscaped areas create a secure perimeter, guiding visitors into a space that prioritizes peace of mind. Upon arrival, a secure vestibule with seamless, bullet-resistant glazing, indistinguishable from the surrounding curtainwall system, greets guests while ensuring safety. Exterior doors operate with key-card access, monitored by advanced cameras, including facial recognition technology. Once inside, the design flows through a series of secure compartments, thoughtfully crafted to direct visitors while preventing access to sensitive areas.

The exterior of Little Raven Elementary celebrates materials, harmonizing wood-look soffit panels, colorful metal accents, and textured concrete block veneer to create an eye-catching visual narrative. This palette reflects the theme of Earth's ecosystems, inviting a connection to nature echoed throughout the interiors. The warm embrace of real wood ceilings enhances acoustics, infusing the space with a comforting ambiance that encourages collaboration and creativity.

Inside, colorful tackboards invite the display of student work, while custom wall graphics narrate the ecological stories of each classroom pod. The media center serves as a vibrant hub, linking all classroom wings and offering flexible spaces for group exploration and individual reflection. Outdoor courtyards, adorned with amphitheater seating, beckon classes outside, fostering learning that dances in tandem with nature.

Little Raven Elementary stands as a beacon of thoughtful planning, where the threads of safety and sustainability intertwine to inspire future generations. Here, students are not merely sheltered; they are empowered to explore the wonders of their world, forging profound connections to the diverse ecosystems that shape our planet and their place within it.

COMMUNITY ENVIRONMENT

Little Raven Elementary stands as more than a school; it's a gathering place, a shared space where the community's roots have woven into every corner. The story of Little Raven starts with a vision—a vision shaped by teachers, parents, students, and local leaders who wanted a school that felt like it belonged to everyone.

The school's design began with this simple but powerful idea: a place where learning and community could intertwine. Picture the layout as a tree, with the main corridor as its trunk, and classrooms and learning spaces branching off like limbs, each crafted to encourage discovery. Every bend and nook is a stage for imagination, a spot for a child to read, to play, to make something new. Outdoor classrooms blend seamlessly with the inside, inviting children to chase curiosity whether under a roof or the open sky.

This tree of learning is rooted in the rich diversity of the neighborhood. A striking mural greets everyone who walks through the doors, its colorful roots tracing maps of distant cities and lands, symbolizing the global heritage of Little Raven's families. It's a reminder that, here, every student belongs, bringing a piece of their own culture to strengthen the collective whole. The classroom wings themselves are themed with biomes from across the Earth—deserts, grasslands, and seas—welcoming students into a world that is both their own and a portal to places beyond.

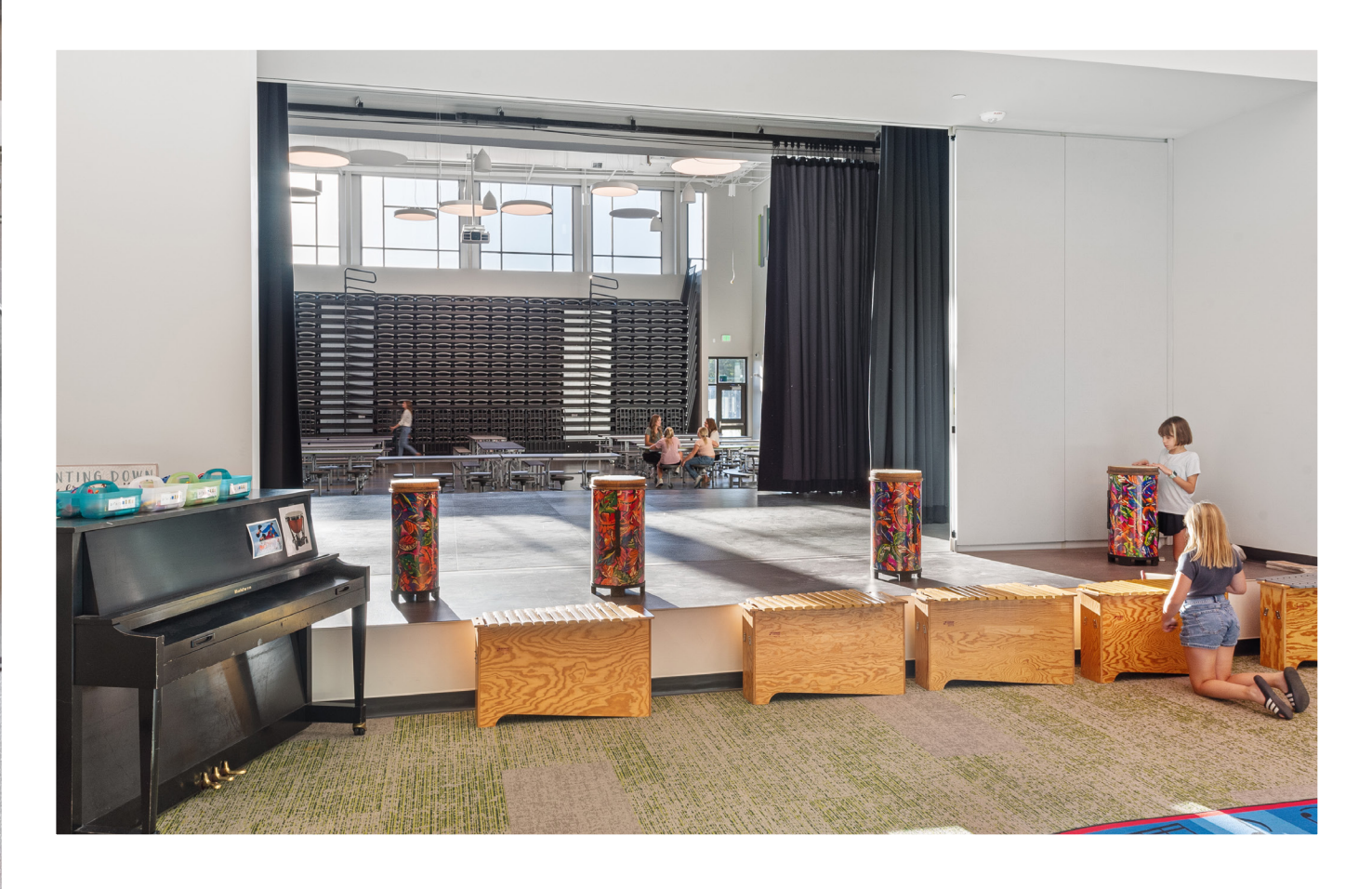
Local voices guided every decision, from the large, central table where families can gather to share a meal, to the versatile gymnasium designed to transform for community sports leagues and events. Evenings see adults from around the area gathering on the gym floor, a place where memories are made beyond school hours. Outside, the U9 turf soccer field draws young athletes, their energy echoing long after the school day has ended, while families stroll the pathways that connect to the larger Littleton Trail, a network that binds Little Raven to its surroundings like a well-worn path through a forest.

The name Little Raven carries deep significance, honoring Chief Little Raven, a peacekeeper of the Arapaho Nation. His spirit of community and connection is reflected throughout the school, where walls share stories of the Arapaho and Cheyenne Nations, blending the past with the present in a way that sparks curiosity and respect. Littleton Public Schools has forged a meaningful partnership with these tribes, learning from one another to better understand their communities. This connection was celebrated with members of the tribe and Little Raven's family joining the school district for the beam "topping out" and ribbon-cutting ceremonies, marking the completion of a space that holds both cultural and community significance.

In Little Raven Elementary, the story of the community isn't just told; it's lived. Each day, students, teachers, and neighbors walk through its doors, adding their own chapters to the legacy of a school that began as a vision and grew into a place that truly belongs to all.



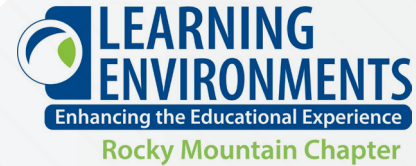
“ Native Americans have been expressing their gratitude for nature—specifically trees—for centuries. The Cherokee call trees the Standing People. A tree symbolizes permanence, longevity and its firm base symbolizes the concept of ‘roots’ and an ongoing relationship with natural surroundings. ”





PERIOD	GUEST
FOULS	PLAYER FOUL
SCORE	MATCH
	SCORE





2024

Peak Design Award

Presented to

MOA ARCHITECTURE

&

LITTLETON PUBLIC SCHOOLS

For

Little Raven Elementary School

A handwritten signature in black ink, reading "Tiffany Vieth".

Tiffany Vieth, AIA

2025 President

A4LE Rocky Mountain Chapter